

4669G-700 ATV TRAILER BUILD INSTRUCTIONS



All Components shown.

Decide if sheep are to run left to right or right to left when standing on Combiclamp.

As shown in main view, this is for **Right to Left**.

Ideally the main frame to be set off the ground by 60 - 70 cm for easy working

Tools Required to assemble -

1 x 13mm combination spanner

1 x 17mm combination spanner

1 x 19mm combination spanner

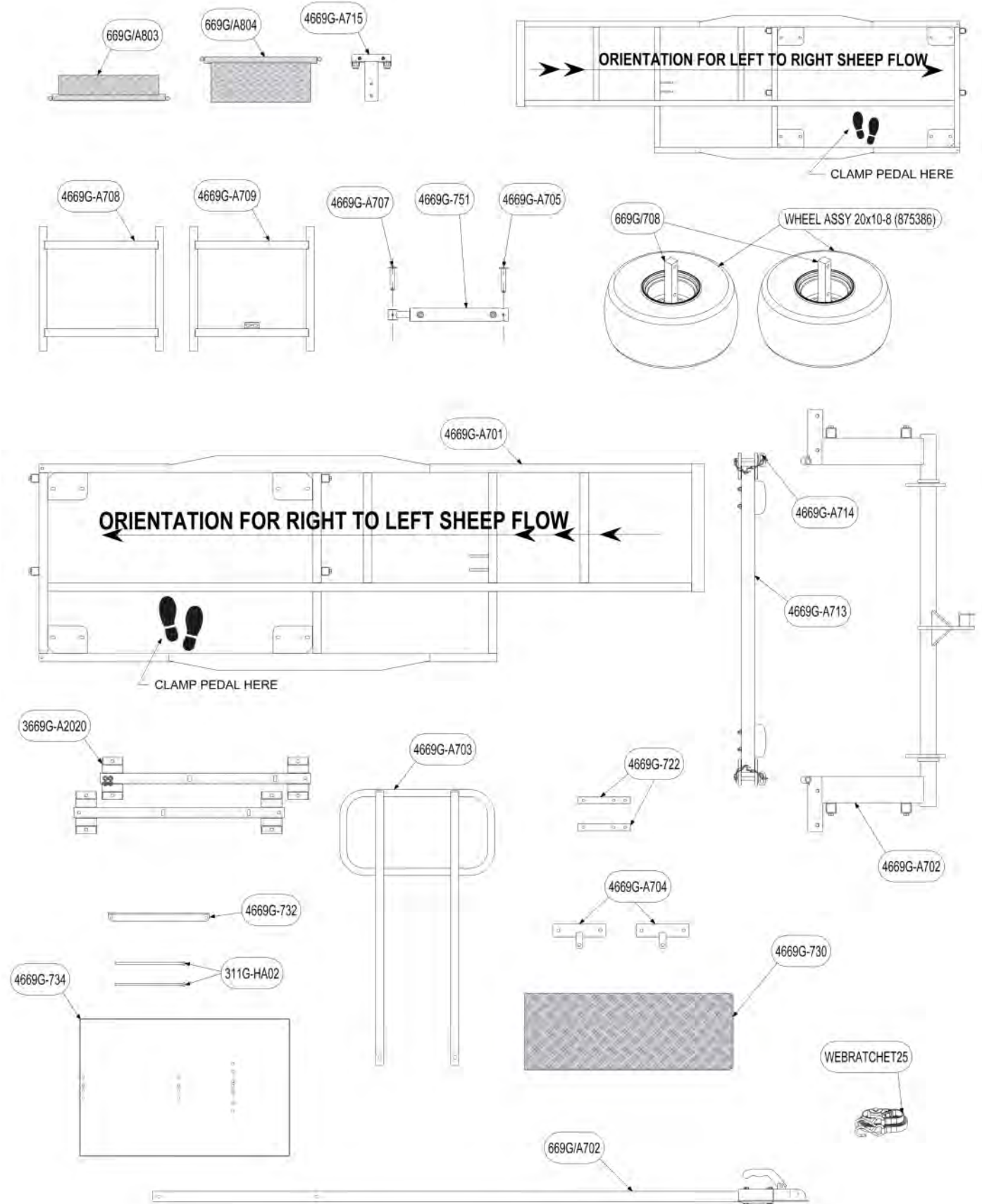
1 x hammer

1 x vice grips

1 x snips

1 x ratchet drive c/w

13mm ,17mm & 19mm sockets



Part list of Main Components.

| 4669G-700 COMPONENT LIST | | | | | |
|--------------------------|-------|---|------|-----|-----|
| PART No. | SECT. | DESCRIPTION | LTH | WTH | QTY |
| 311G-HA02 | | BATTERY CLAMP ROD ASSY | | | 2 |
| 323G/01 | FB | 20 x 5(RAMP TIE DOWN) | 170 | 20 | 2 |
| 669G/708 | AXLE | 4 STUD 100/60 (WHAXLES35420G) PAINT | 200 | | 2 |
| 669G/A702 | | DRAWBAR ASSY | | | 1 |
| 669G/A803 | | SHORT GAP COVER ASSY | | | 1 |
| 669G/A804 | | LONG GAP COVER ASSY | | | 1 |
| 3669G-A2020 | | DUMMY LOAD BARS (ONE PAIR) | | | 1 |
| 4669G-722 | RHS | 25 x 25 (RAMP SUPPORT) | 200 | | 2 |
| 4669G-730 | SHEET | ALU.CHEQ. (STEP PLATE) | 833 | 377 | 1 |
| 4669G-732 | RSA | 30 x 30 (BATTERY CLAMP) | 385 | | 1 |
| 4669G-734 | SHEET | BATTERY/MOTOR TRAY GALV. | 937 | 600 | 1 |
| 4669G-751 | RAM | HYD. RAM 420 C/C- 670 O/C - PAINT | 40 | 25 | 1 |
| 4669G-A701 | | CHASSIS ASSY | | | 1 |
| 4669G-A702 | | AXLE ASSY | | | 1 |
| 4669G-A703 | | SAFETY BAR ASSY | | | 1 |
| 4669G-A704 | | DRAWBAR SOCKET ASSY | | | 2 |
| 4669G-A705 | | RAM PIN ASSY | | | 1 |
| 4669G-A707 | | RAM PIN ASSY | | | 1 |
| 4669G-A708 | | H-FRAME ASSEMBLY | | | 1 |
| 4669G-A709 | | H-FRAME ASSY HOSES | | | 1 |
| 4669G-A713 | | AXLE SUSPENSION ASSY | | | 1 |
| 4669G-A714 | | LOCKING PIN ASSY | | | 2 |
| 4669G-A715 | | CAP & SWITCH BRKT ASSY | | | 1 |
| HOSE4669G-02 | HOSE | Hyd. 2SN 1/4" BSP 90° ENDS. ROT. 90° | 1500 | | 1 |
| HOSE4669G-03 | HOSE | Hyd. 2SN 1/4" BSP F.90° END & BSP F.STR | 1500 | | 1 |
| CABLE35RED-600-M8 | | CABLE 35 RED M8 RING ENDS | 600 | | 1 |
| CABLE35BL-1000-M8 | | CABLE 35 BLK M8 RING ENDS | 1000 | | 1 |
| SPRINBUN750 | | BUNGEE (COVER TIE DOWN) | 750 | | 2 |
| TARP-4669G | | PVC TARPULIN MOTOR COVER | 800 | 770 | 1 |
| VALVEFC14-2 | VALVE | HYD. FLOW CONTROL | | | 1 |
| WHPN20x10-8 | | WHEEL ASSY 20x10-8 (875386) | | | 2 |
| TABLOCKPIN3/8 | PIN | TAB LOCK (T-LOCK-8SQ) | 70 | 10 | 5 |
| WEBRATCHET25 | STRAP | RATCHET &"S"HOOKS | 4200 | 25 | 1 |
| HYDPUMP12VDA75 | PUMP | Hyd. Power Pack 12vDC - D.A. | | | 1 |
| | | M16 WASHER (PL) FORM C | | | 2 |
| | | M12 x 120 BOLT (PL) | | | 2 |
| | | M12 x 110 BOLT(PL) | | | 2 |
| | | M12 x 70 BOLT(PL) | | | 3 |
| | | M12 WASHER (PL) FORM C | | | 7 |
| | | M12 NYLOC NUT(PL) | | | 7 |
| | | M10 x 100 BOLT (PL) | | | 4 |
| | | M10 x 80 BOLT (PL) | | | 2 |
| | | M10 x 65 BOLT (PL) | | | 2 |
| | | M10 x 50 SSCREW (PL) | | | 2 |
| | | M10 x 35 SSCREW(PL) | | | 12 |
| | | M10 x 20 SSCREW (PL) | | | 6 |
| | | M10 WASHER (PL) FORM C | | | 36 |
| | | M10 SPRG WASHER(PL) | | | 2 |
| | | M10 NYLOC (PL) | | | 16 |
| | | M8 x 70 BOLT (PLATED) | | | 4 |
| | | M8 x 60 BOLT(PL) | | | 10 |
| | | M8 x 50 BOLT(PL) | | | 4 |
| | | M8 WASHER (PL) FORM C | | | 28 |
| | | M8 NYLOC NUT (PL) | | | 20 |
| | | BATTERY CLAMP POS. M8 STUD | | | 1 |
| | | BATTERY CLAMP NEG. M8 STUD | | | 1 |
| | | 3/16" x 1" SPLIT PIN (PL) | | | 2 |
| | | 3/8" DOWTY WASHER | | | 4 |
| | | 3/8" BSP M/M BULKHEAD ADAPTOR | | | 1 |
| | | 3/8" BSP FEM/FEM 90° ELBOW | | | 1 |
| | | 1/4" x 3/8" BSP M/M ADAPTOR | | | 4 |
| | | 1/4" x 1/4" BSP M/M ADAPTOR | | | 2 |
| | | 1/4" DOWTY WASHER | | | 4 |
| | | 1/4" BSP MFF BURST VALVE | | | 1 |

Set Main frame 4669G-A701 on trestles 60- 70 cm high in desired orientation for sheep flow.

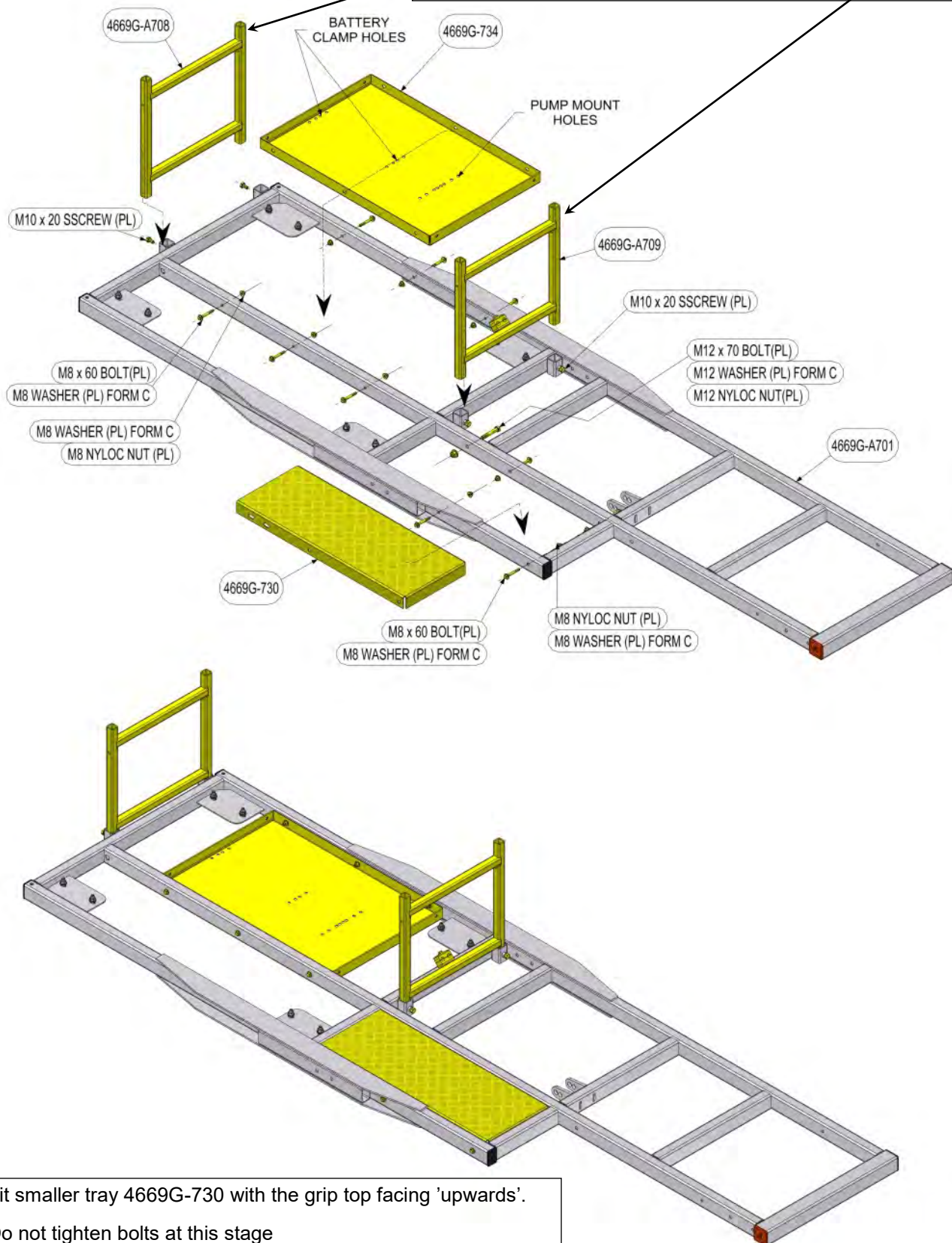
For simplicity all views are Right to Left orientation. For Left to Right operation the main frame will be rotated 180° or upside down as shown on the components page.

Fit main tray 4669G-734 with battery clamp holes to rear and pump holes to drawbar end.

Locate setscrews M10x20 for main 'H' frame 4669G-A709 c/w hose clamp which will take the lead up ramp.

Locate 'H' frame 4669G-A709 and tighten setscrews.

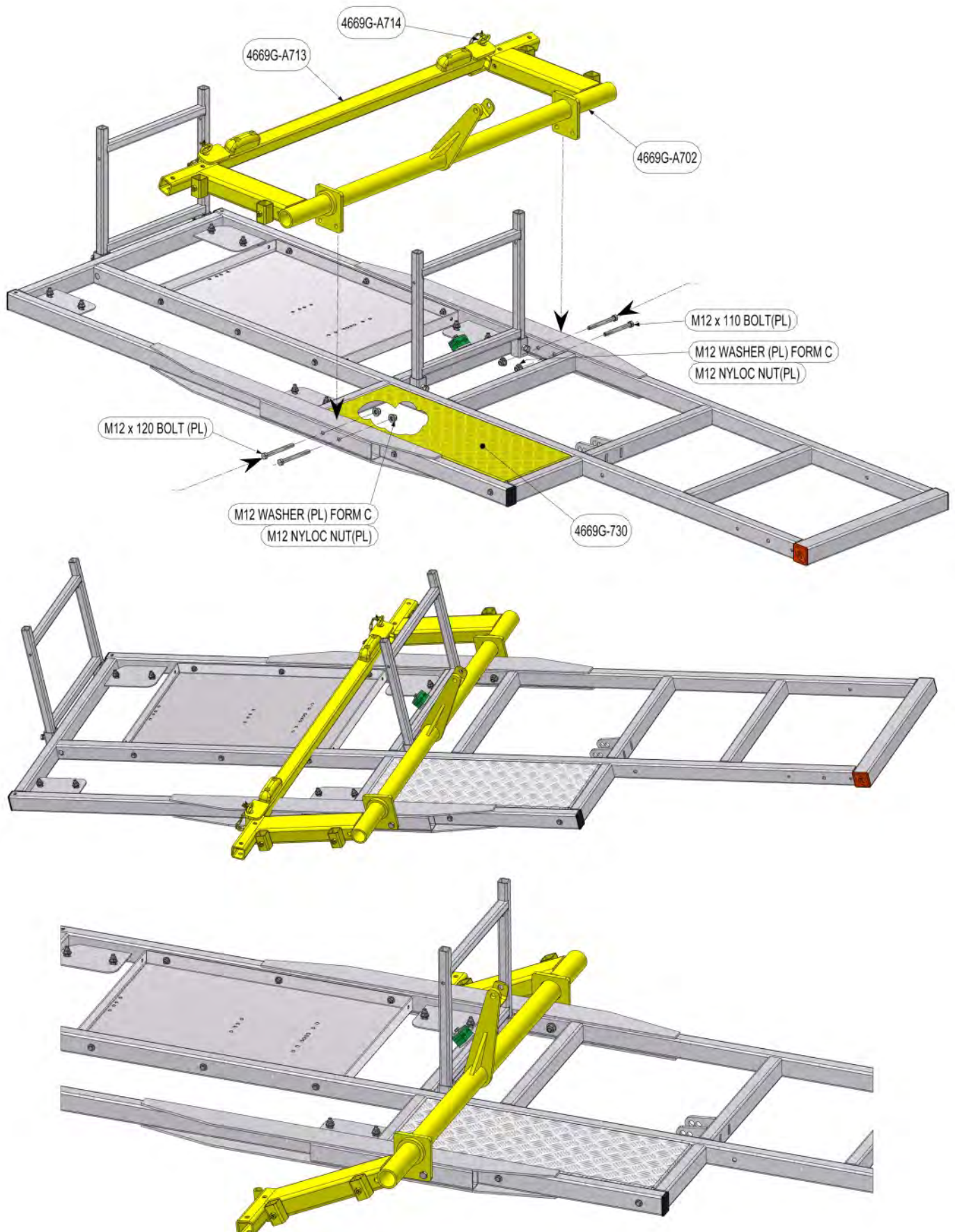
Repeat for plain rear 'H' frame 4669G-A708



Fit smaller tray 4669G-730 with the grip top facing 'upwards'.

Do not tighten bolts at this stage

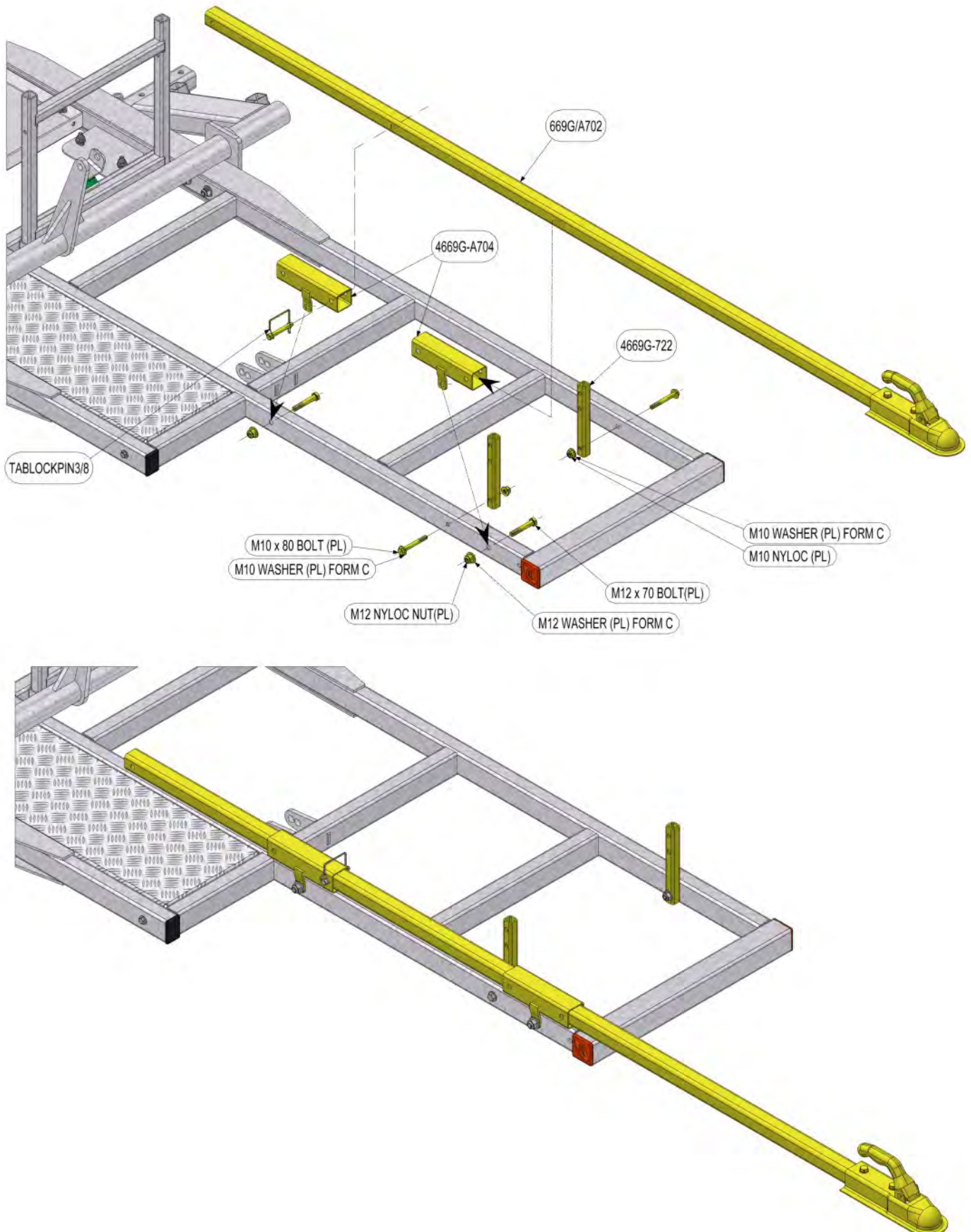
Position the Axle assembly 4669G-A702 c/w the Axle suspension assembly 4669G-A713 to align with holes in frame.
Fit and tighten M12 x 120 & M12 x 110 mounting bolts to secure axle assembly.
Finish tightening bolts securing 4669G-730 step plate.
Remove Axle suspension assembly 4669G-A713 to allow axle mounts to freely 'drop down'



Fit two drawbar socket assemblies 4669G-A704 & tighten completely until lugs meet RHS using M12 x 70 bolts.

Fit two lead up ramp support bars 4669G-722 & tighten using M10 x 80 bolts.

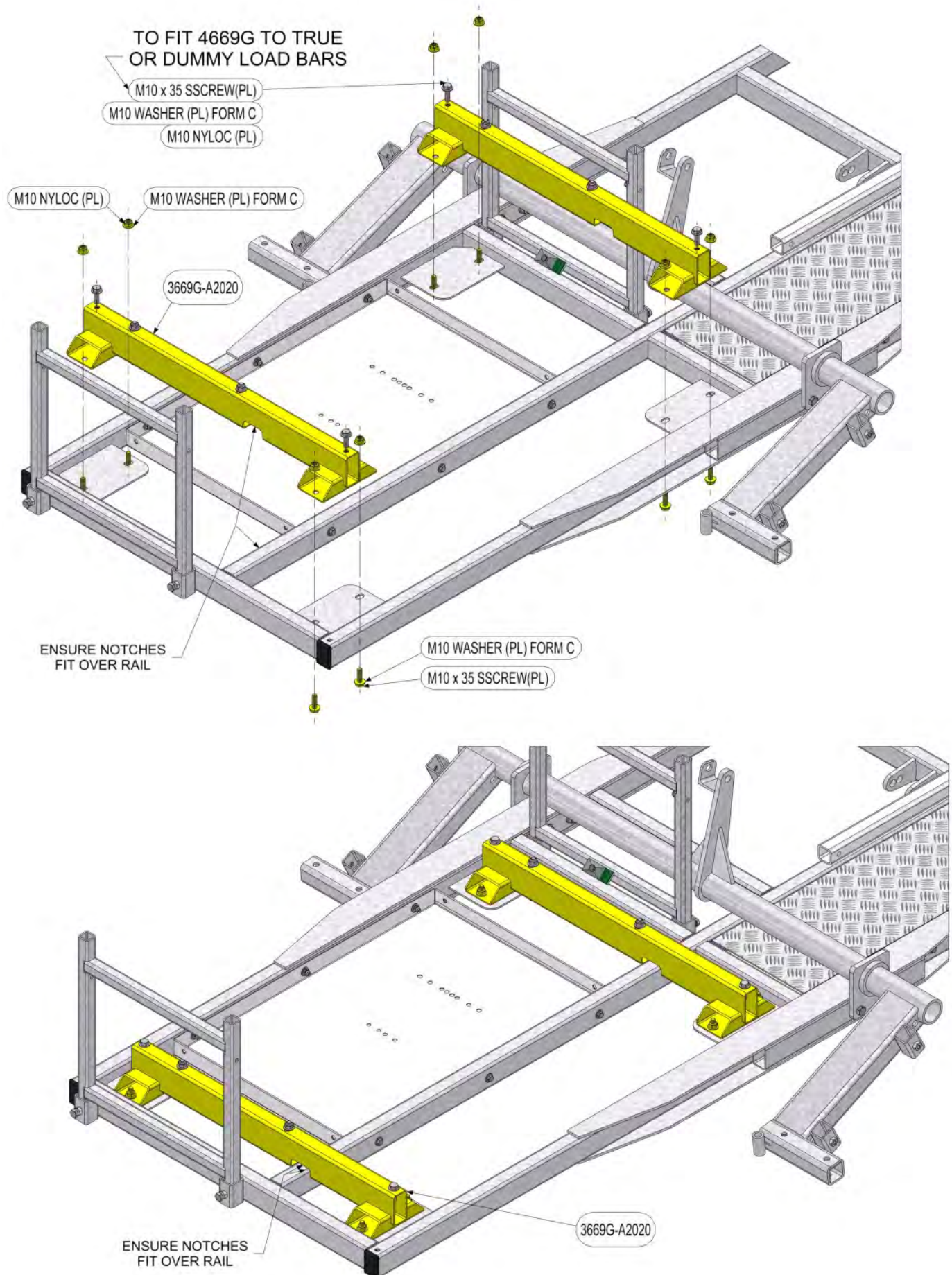
Slide drawbar assembly 669G/A702 into sockets and secure with TABLOCKPIN3/8 in desired hole.



If fitting 4669G and weighing load bars are not to be used then proceed with fitting dummy load bars as shown below to give correct operating height.

Some modification will be required if fitting older type 669G or 3669G Combiclamp, see next page.

If weighing is to be carried out using 4669G, fit true load bars in place of the dummy load bars.

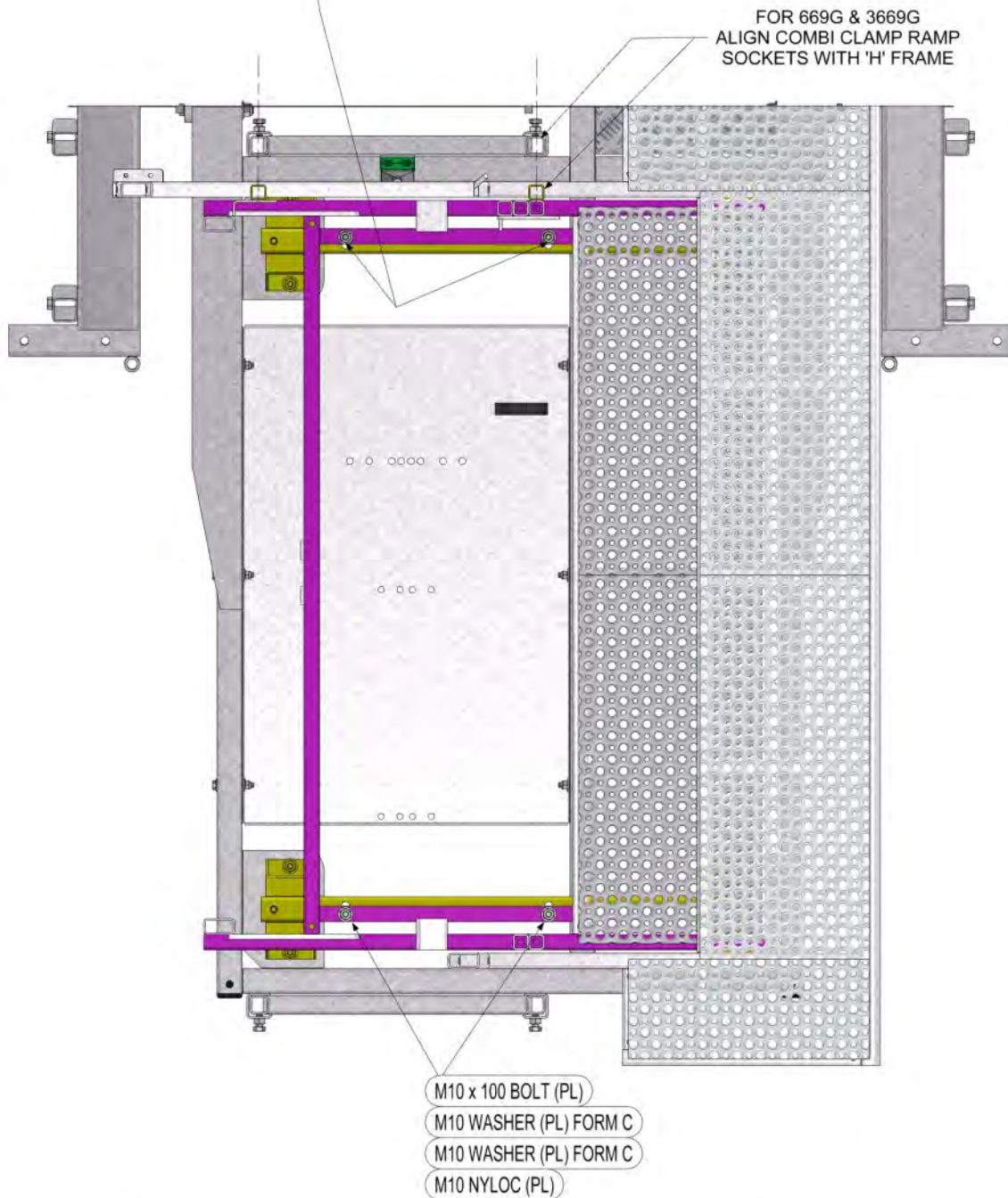


Some modification will be required if fitting older type 669G or 3669G Combiclamp and dummy load bars.

If weighing is to be carried out using older type 669G or 3669G Combiclamp the optional interface assembly 3669G-A1007 will be required. Contact Ritchie for Info.

NOTES FOR FITTING 669G or 3669G COMBI CLAMP TO DUMMY LOAD BARS

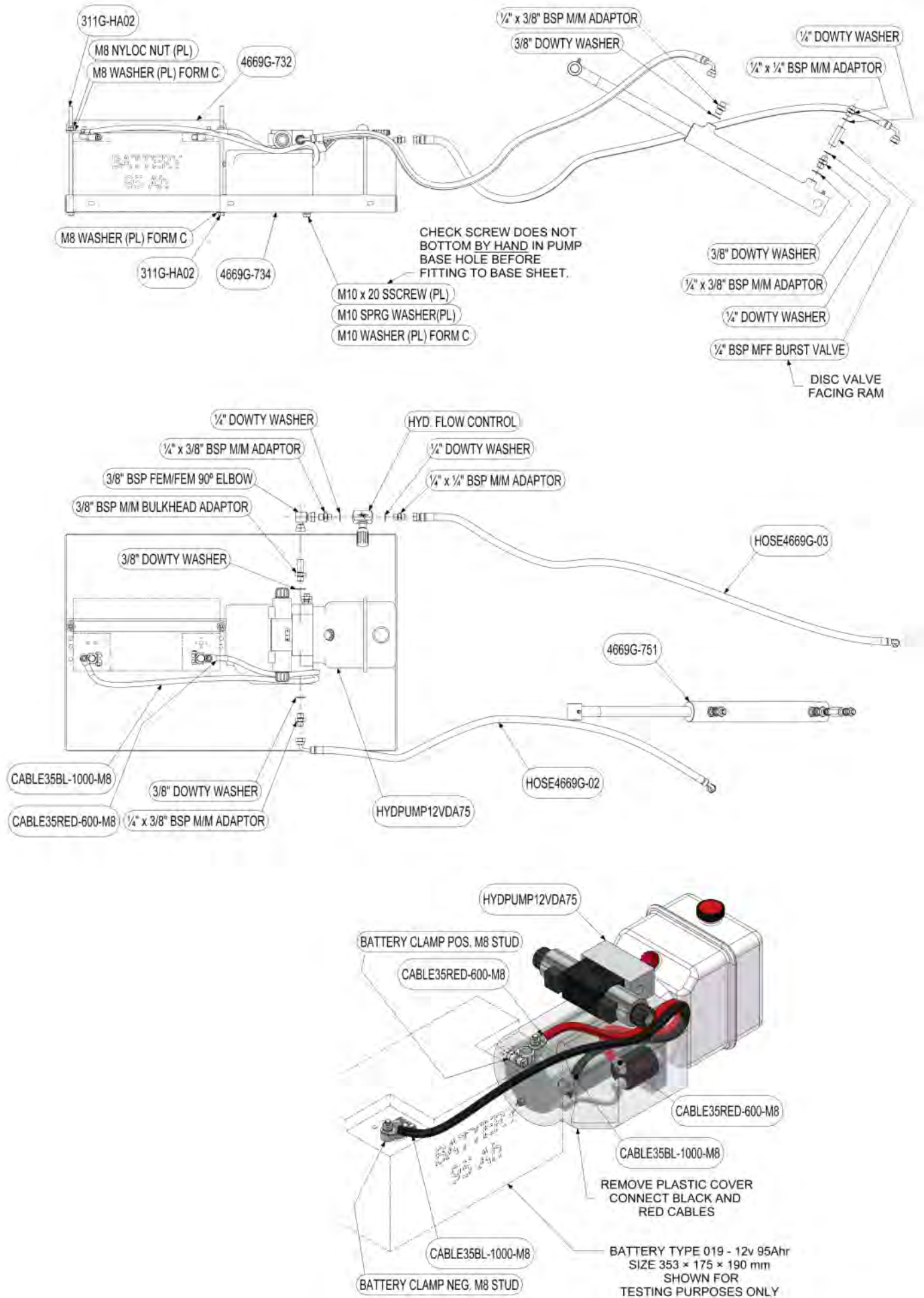
1. PLACE **669G** or **3669G** ON DUMMY LOADBARS, ALIGN RAMP SOCKETS.
2. MARK CENTRE OF LOAD BAR SLOTS ON FLAT BARS ON BASE OF COMBI CLAMP.
3. TIP OVER COMBI CLAMP AND DRILL Ø11 HOLES IN CENTRE OF FLAT BARS AT SLOT CENTRES
4. AFTER DRILLING, PLACE COMBI CLAMP ON DUMMY LOAD BARS, ALIGNING WITH SLOTS.
5. BOLT COMBI CLAMP TO DUMMY LOAD BARS USING BOLTS, WASHERS AND NYLOCS.



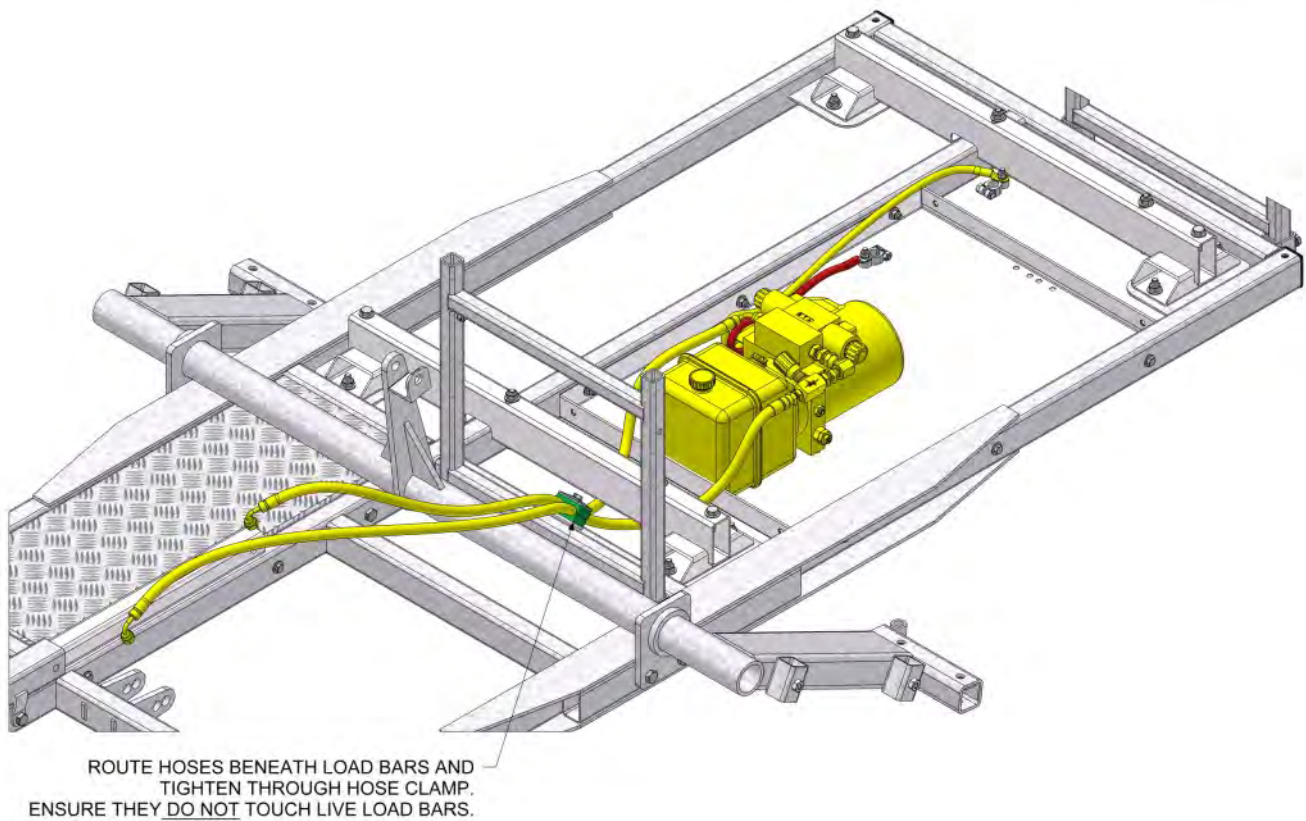
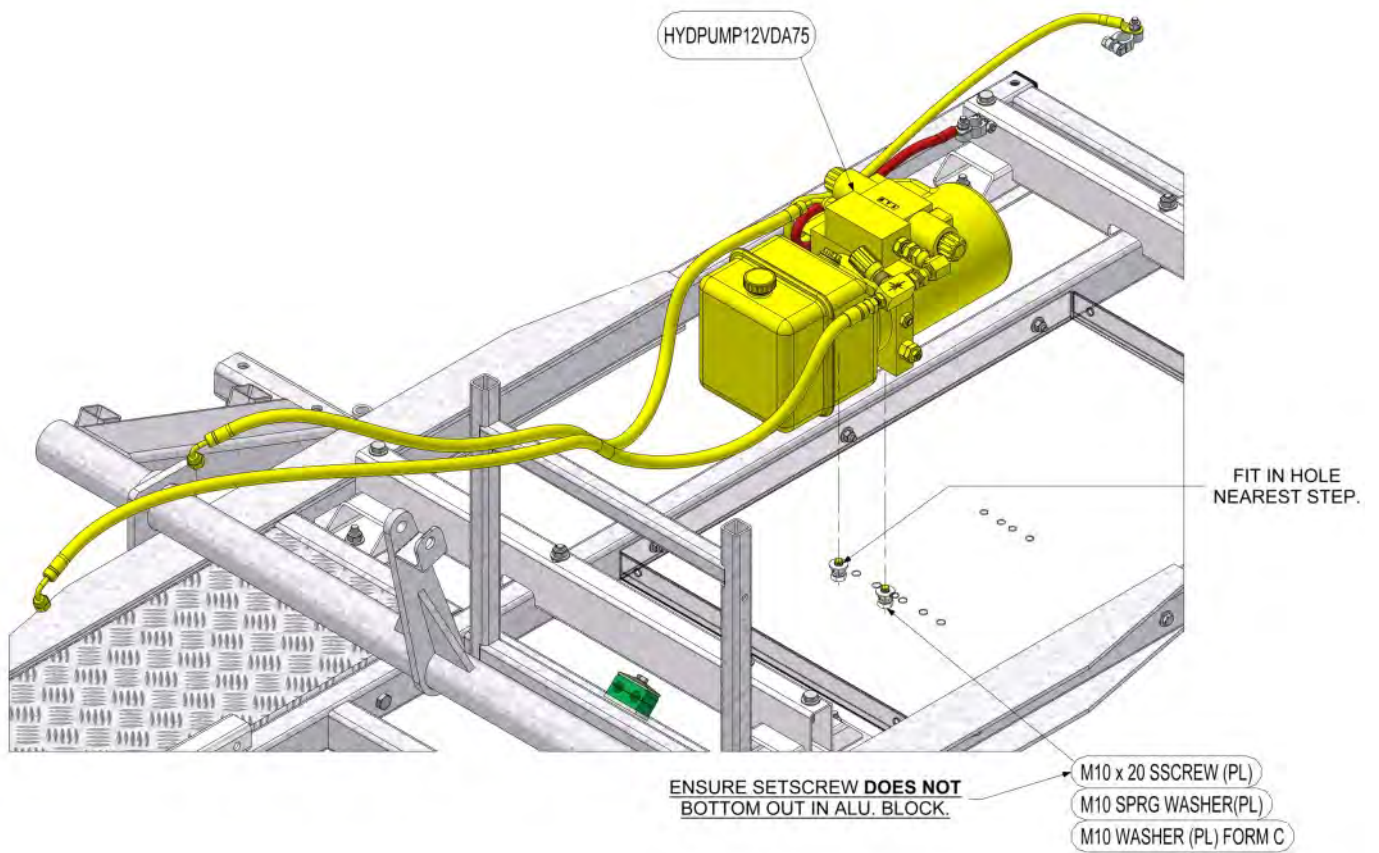
NOTE FOR FITTING 669G or 3669G COMBI CLAMP TO WEIGHING LOAD BARS.

TO FIT WEIGHING LOAD BARS TO 4669G-700 USING 669G OR 3669G,
OPTIONAL ITEM 3669G-A1007 INTERFACE FRAME WILL BE REQUIRED.

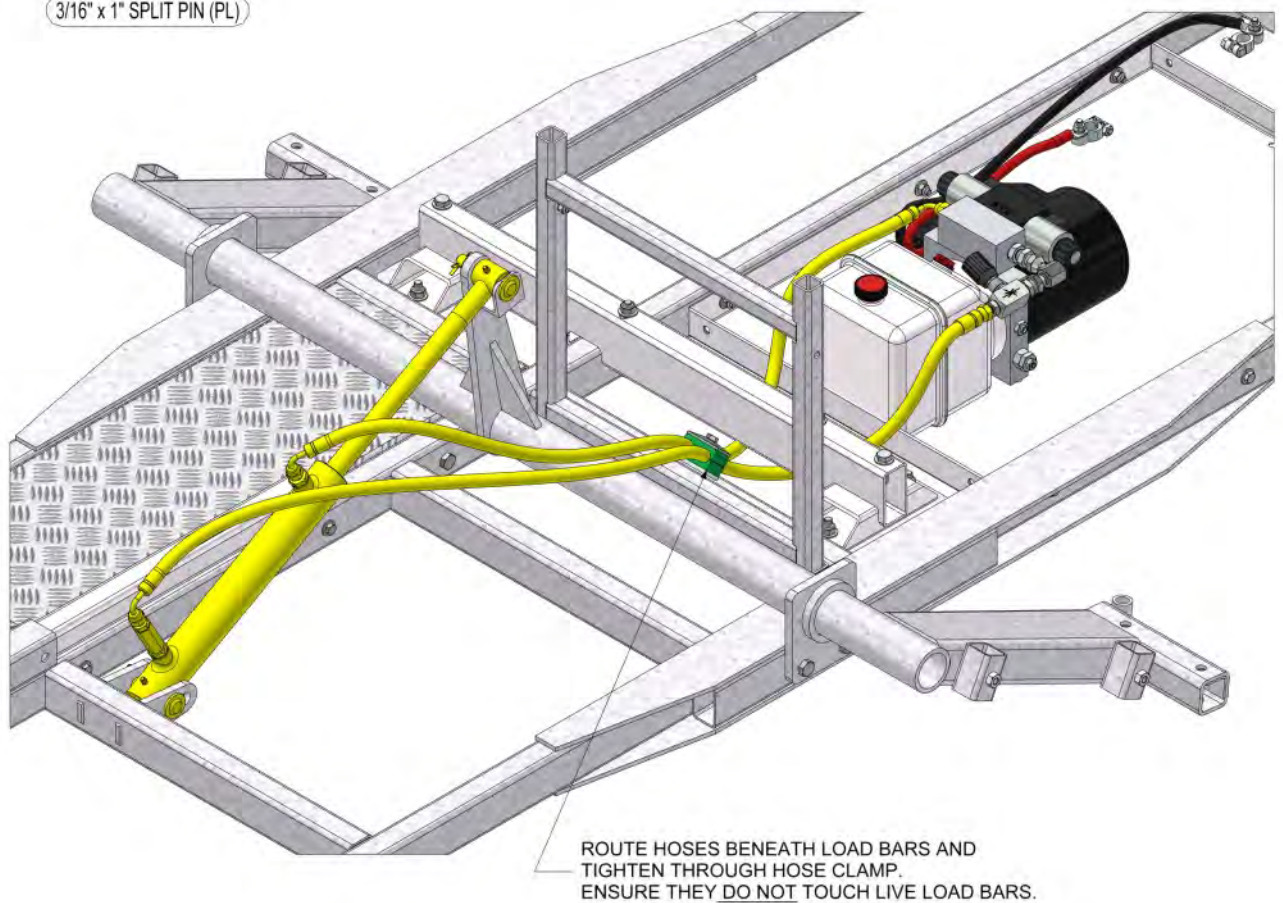
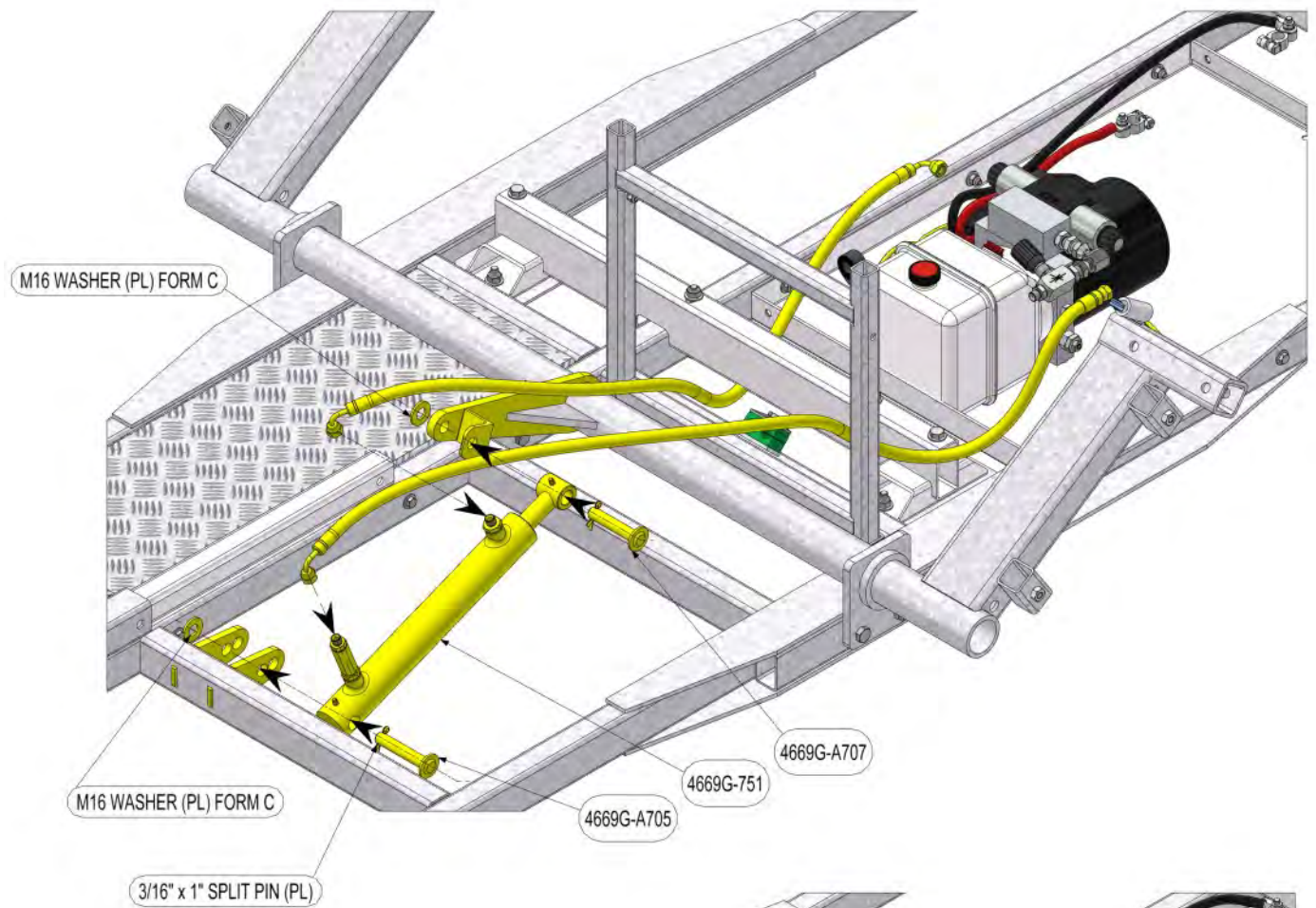
Assemble and fit Electrohydraulic unit as shown in the following images.



Assemble and fit Electrohydraulic unit as shown in the following images.

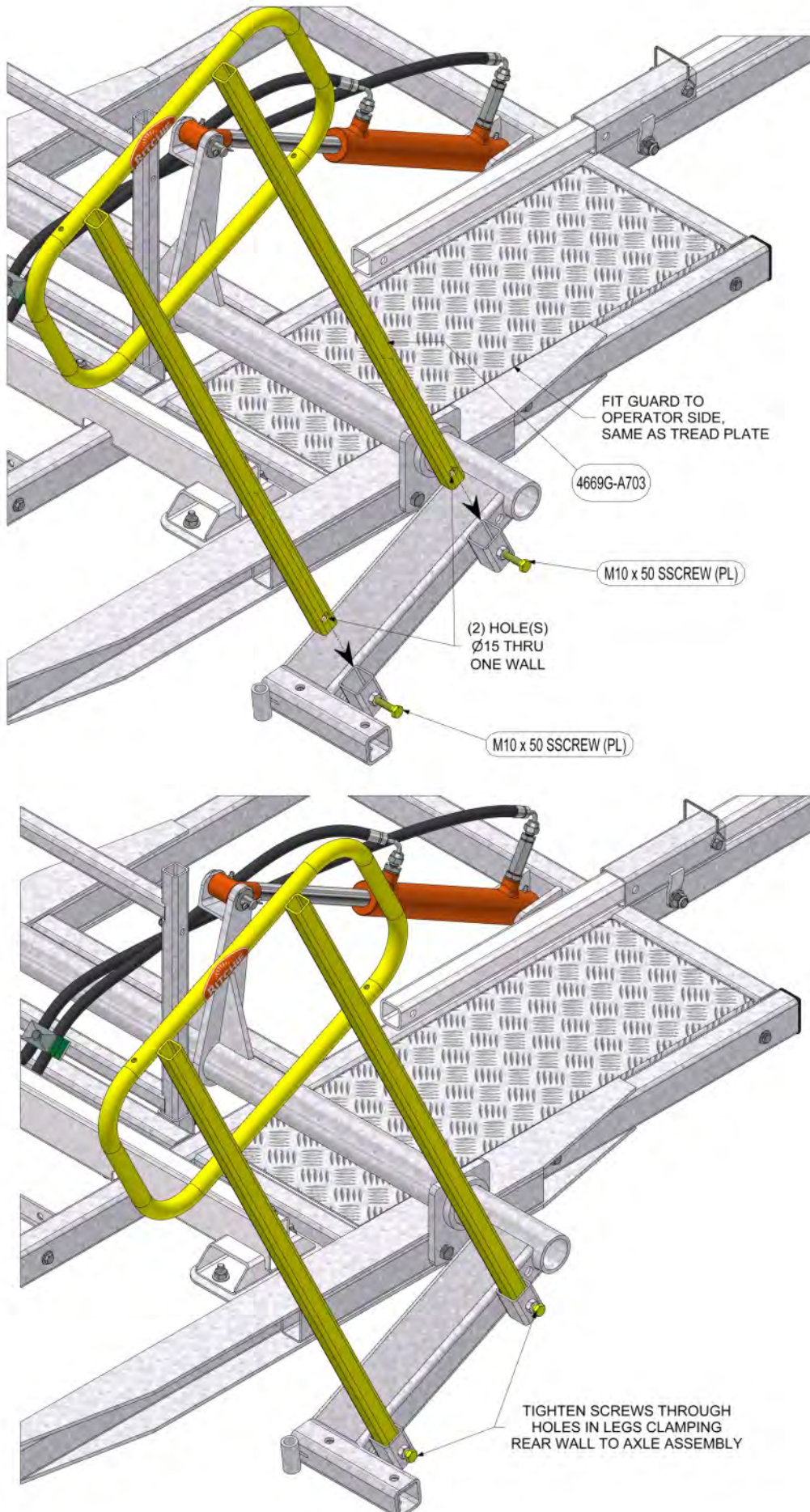


Fit cylinder end of the hydraulic ram 4669G-751 to main frame, secure using pin 4669G-A705, washer and cotter pin. Rotate the axle shaft to allow the rod end of hydraulic ram to fit. Secure with pin 4669G-A707, washer and cotter pin. Route hoses beneath load bars, locate in hose clamp and tighten. Route hoses beneath load bars, locate in hose clamp and tighten.

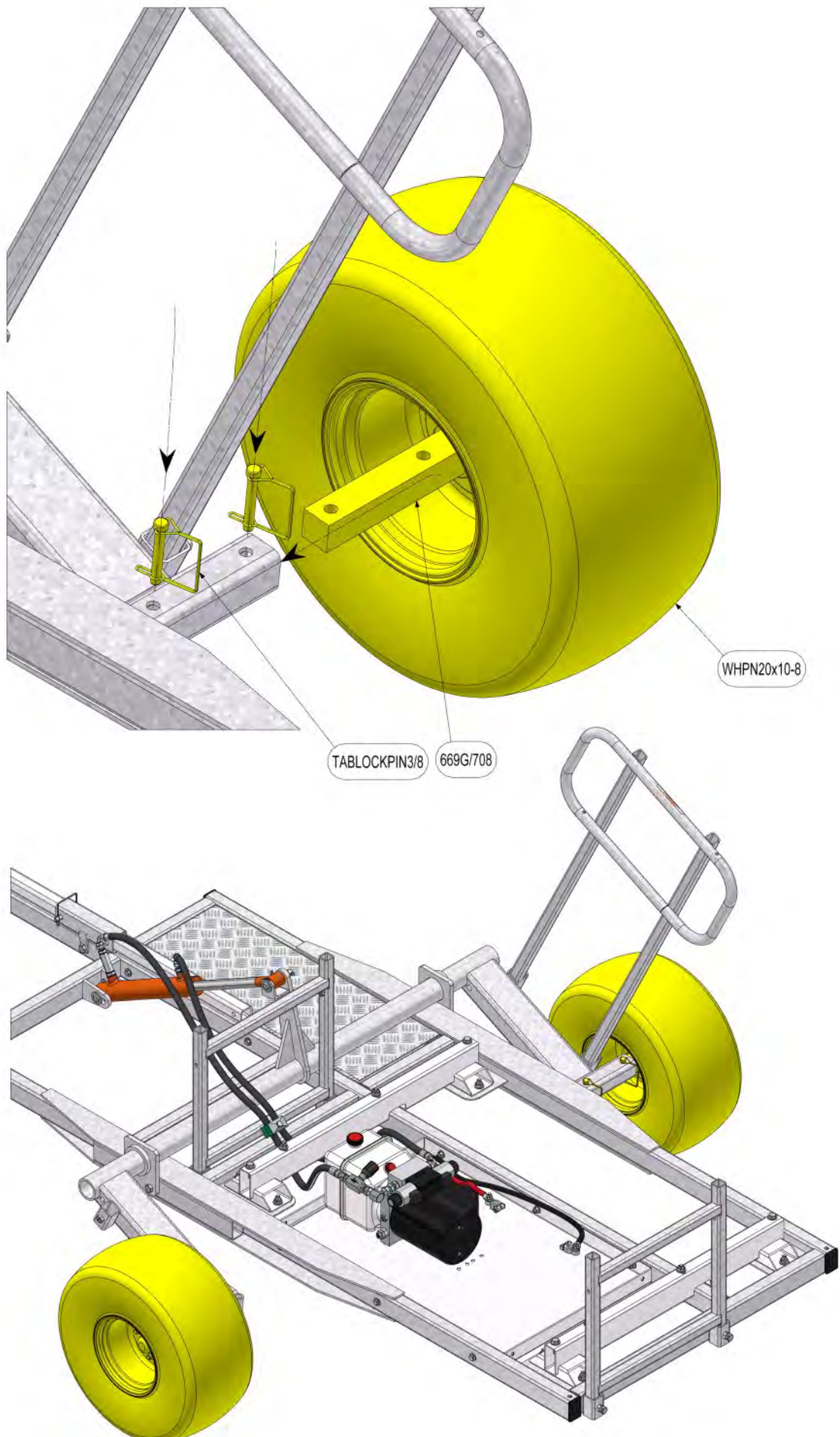


Fit set screws to locate the secure safety bar assembly 4669G-A703 which is located on the operator / pedal side of the CombiClamp.

Fit safety bar assembly 4669G-A703 in sockets with tubular rail to operator side and tighten screws to secure.



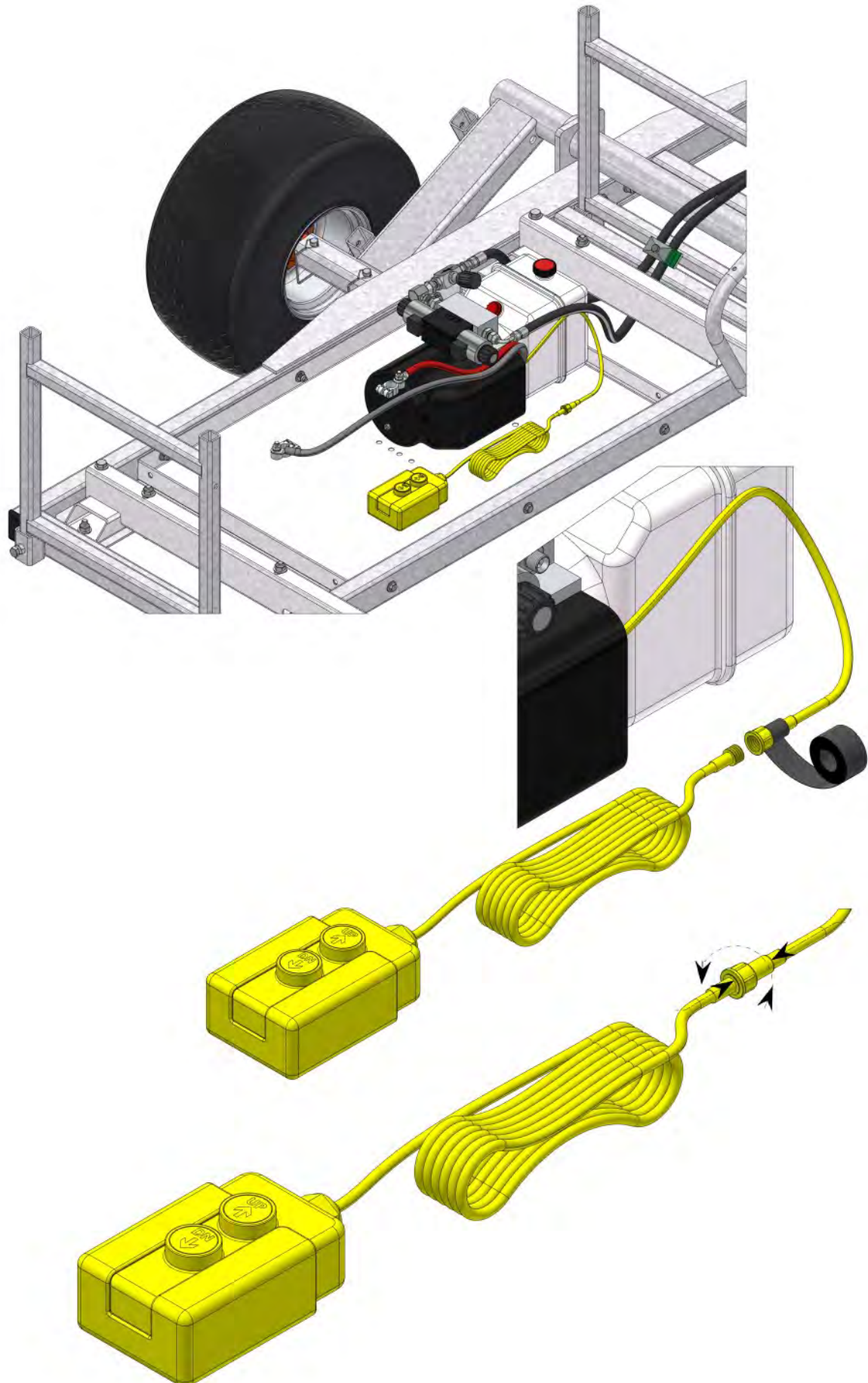
Locate wheel & axle assembly in axle socket with axle holes vertical then secure with two TABLOCKPIN3/8 pins. Repeat for other side wheel assembly.



Assemble wired remote control unit.

Secure the gland nut with a piece of tape behind nut to allow trouble free fixing of tail lead assembly to control button assembly.

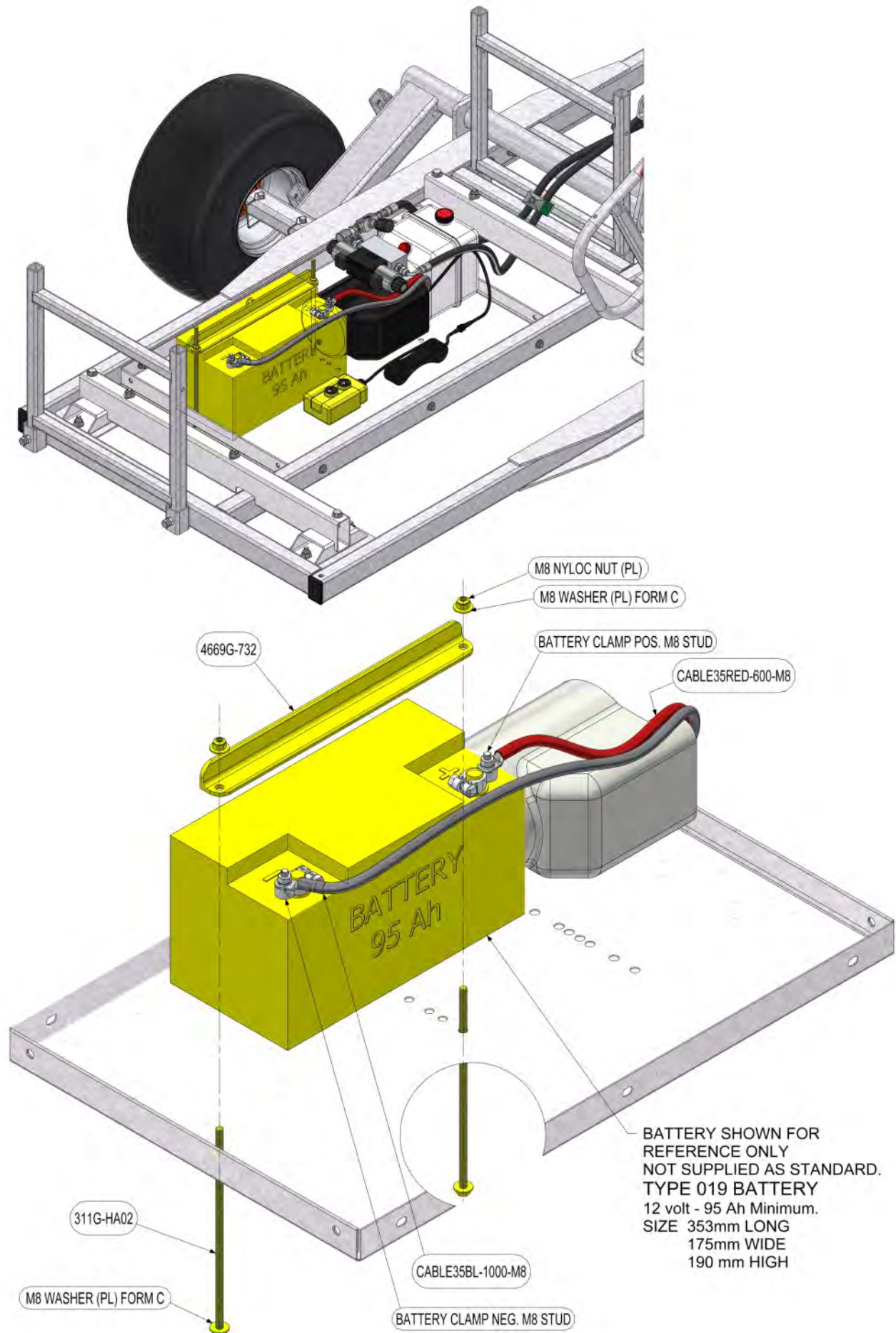
Connect control button lead assembly to tail lead assembly then tighten gland nut to control button lead socket body.



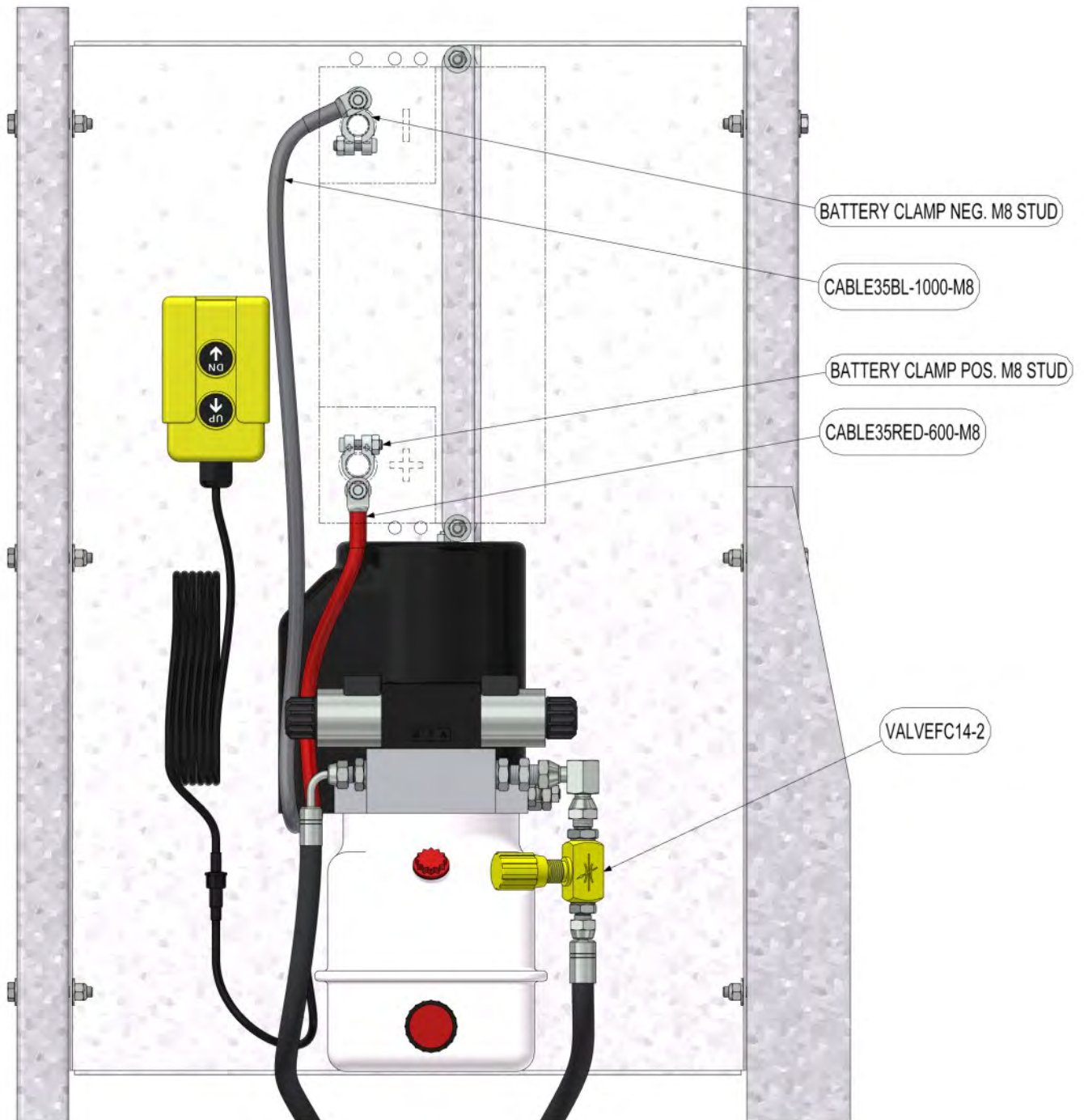
Fit battery (own supply - Type 019 - 95Ah min.) using clamp rod assemblies 311G-HA04 & clamp bar 4669G-732.

Fit the positive and negative leads to the battery.

Ensure oil tank is filled above minimum level and test the up and down action of the axle assembly.

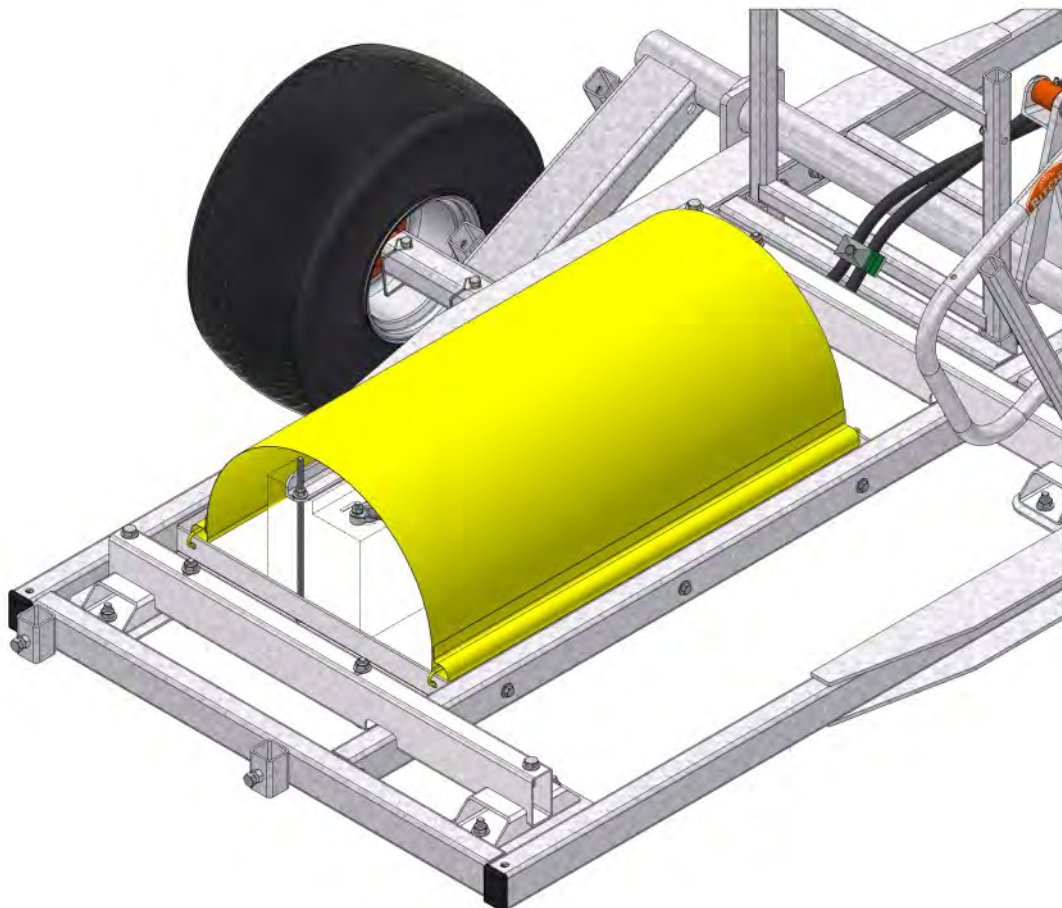
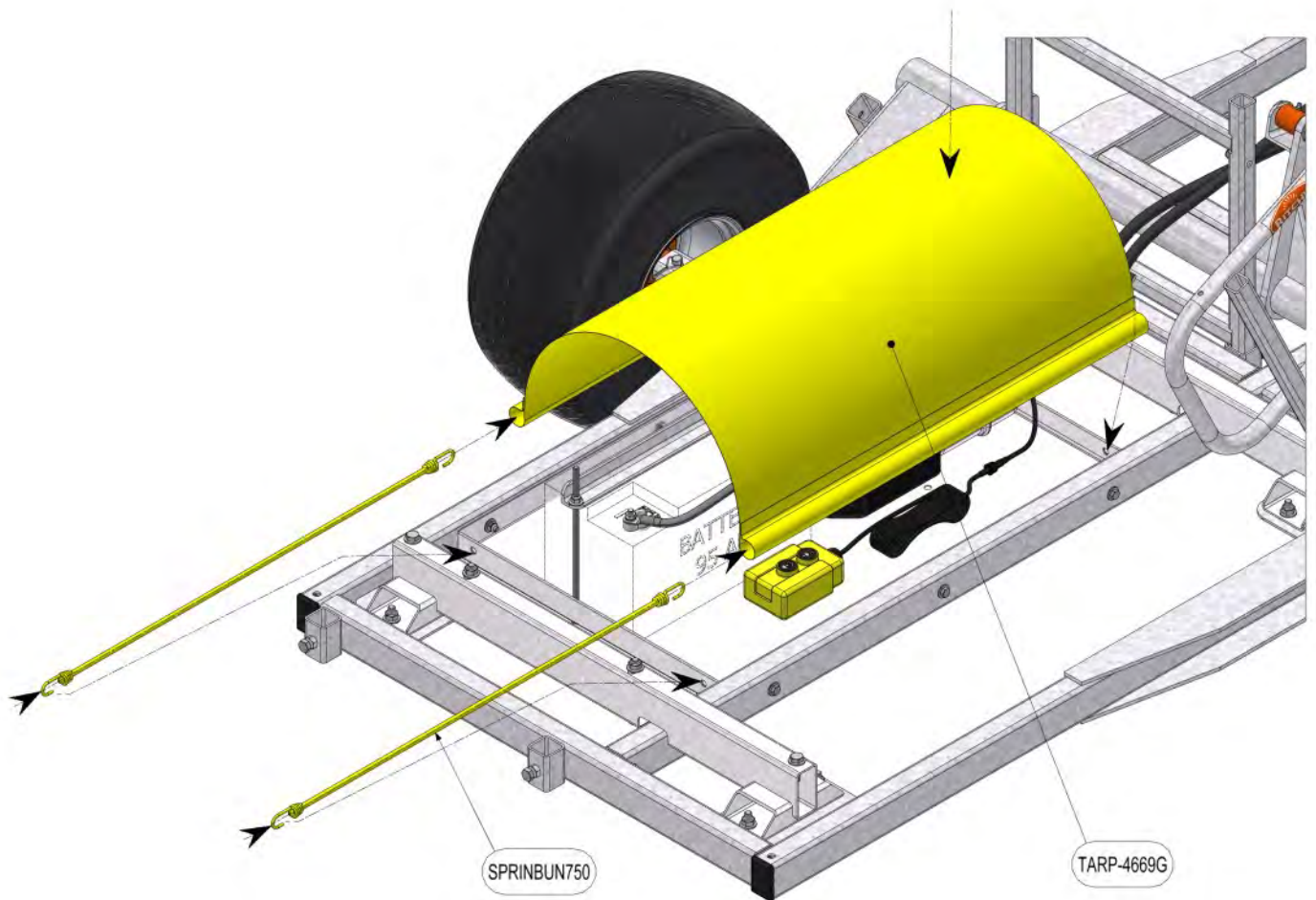


The flow control valve VALVEFC14-2 can be adjusted to vary the speed which the axle will raise and lower. It is recommended the action is set to slower and steady.

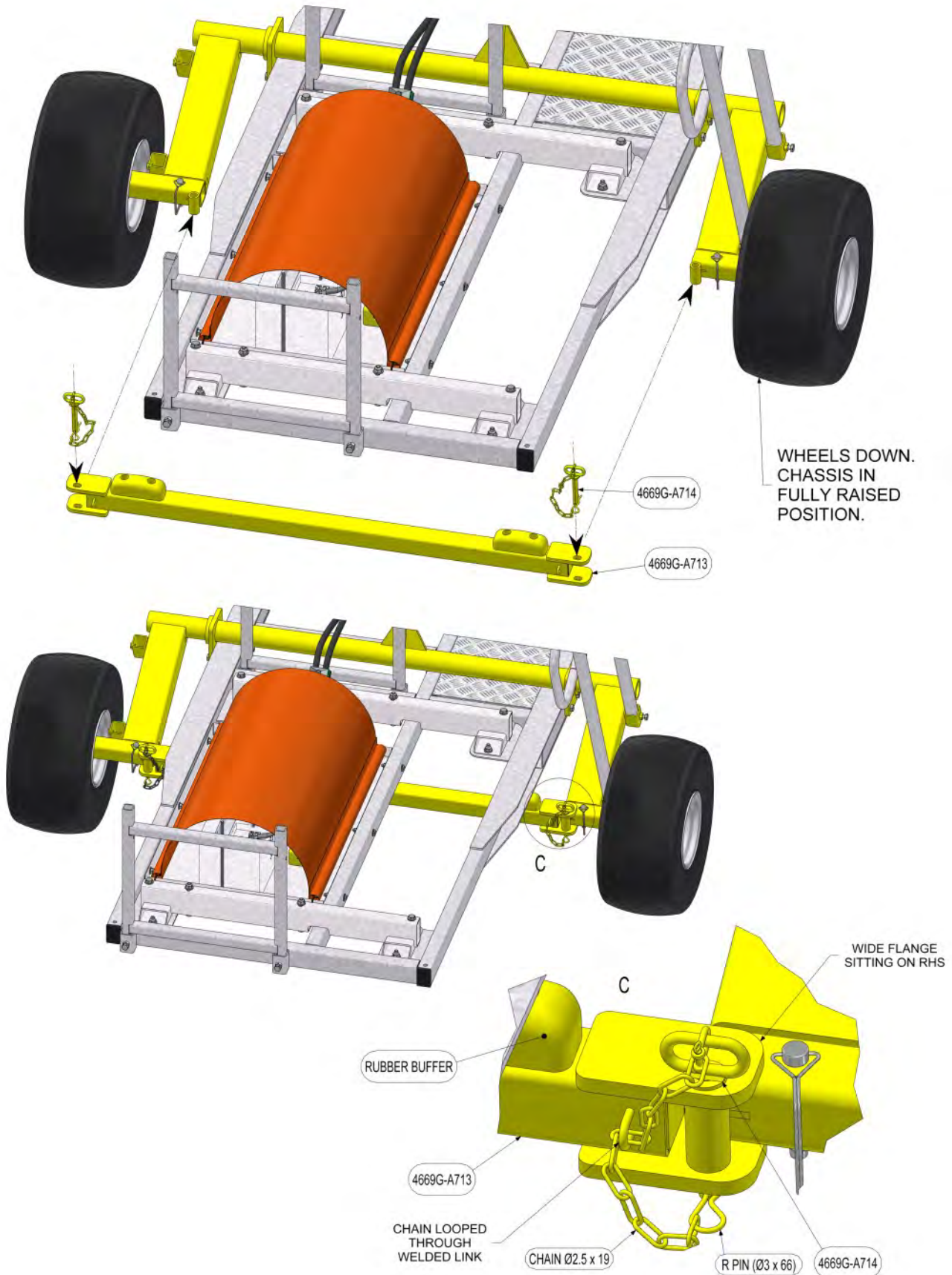


Fit the PVC cover TARP-4669G over the pump, battery, hoses and cables.

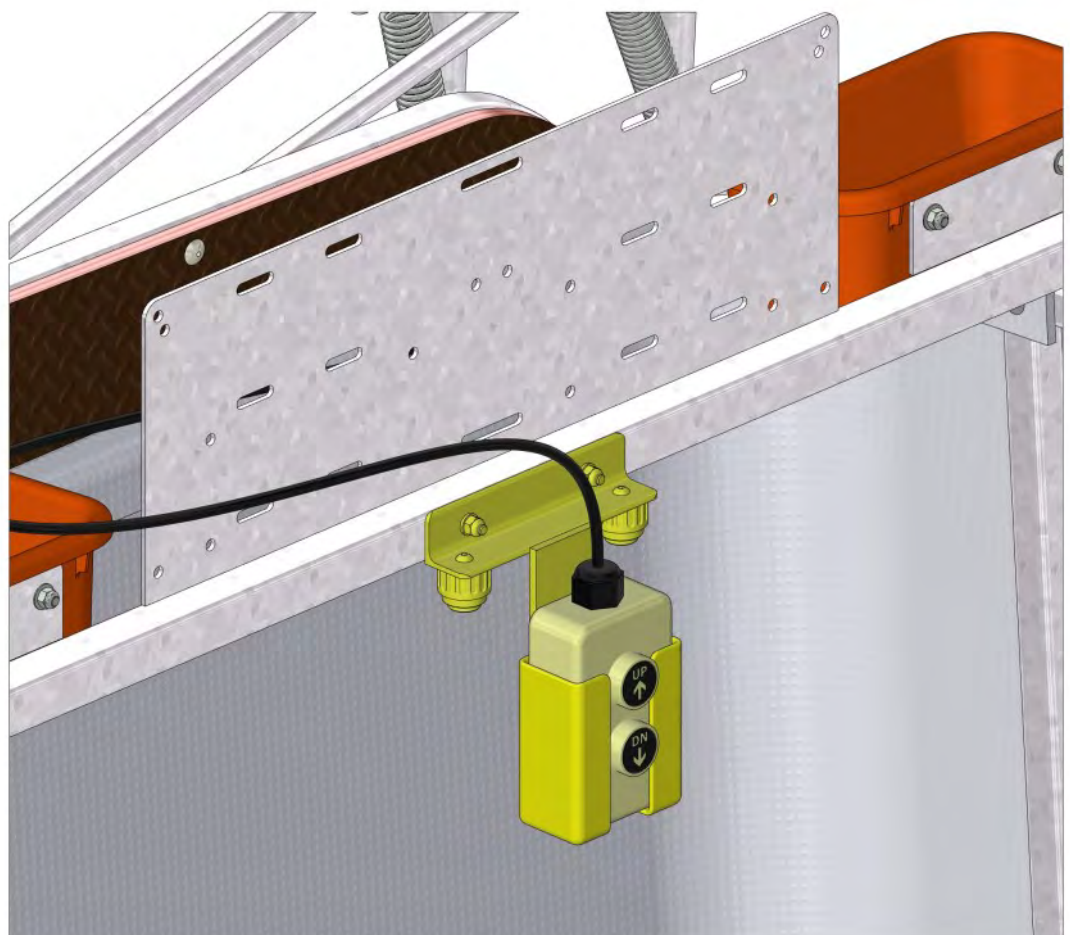
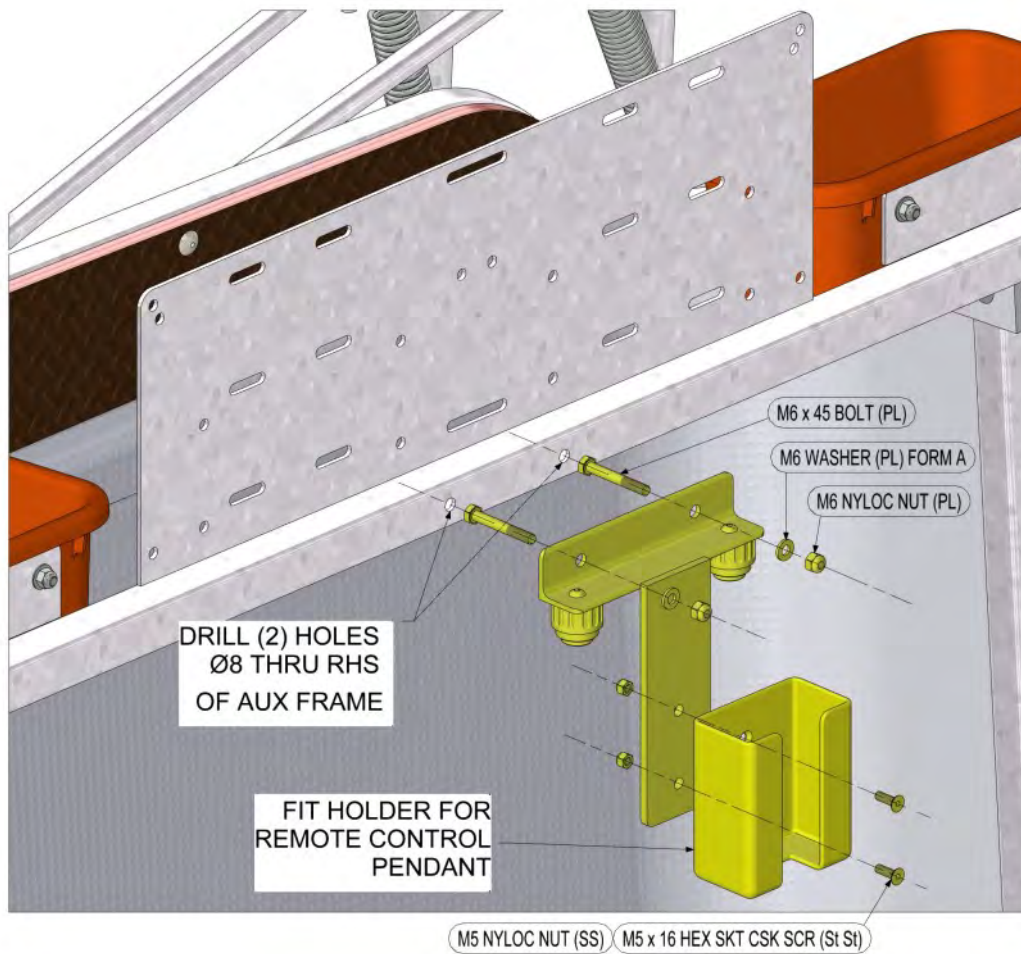
Slide bungee cords SPRINBUN750 through the sleeves of the cover and hook into holes at the ends of the tray.



Operate hydraulic ram using remote button controller to set the chassis in the fully raised (wheels down) position. Fit the axle suspension assembly 4669G-A713 to the axle assembly using locking pins 4669G-A714. Using remote button controller, lower the chassis only until it touches the rubber buffers but NO FURTHER immediately release the button. Powering the hydraulics more than this will over-compress the buffers and possibly damage the chassis or other components. With the axle suspension assembly 4669G-A713 removed the hydraulics can raise the wheels off the ground to re-move wheels.



Fitting cable stow bracket and remote control pendant holder to combi clamp auxiliary frame.



4669G-700 ATV TRAILER

BUILD INSTRUCTIONS

