



Head Scoop

No. 323GL (left hand)
No. 323GR (right hand)

**Instruction Manual
& Operating Guide**

Introduction

The Ritchie Head Scoop (model 323g) can be fitted to Ritchie cattle crate models 339, 339g, 332g and 310g. It may be fitted to other makes and models using the weld on brackets available if required.

The Head Scoop is available in left hand (323gl) and right hand (323gr) versions. This should be stated at time of ordering.

Main Features

- The Head Scoop has been designed to control the head of cattle making routine tasks easier and safer.
- The unit prevents an animal from 'going down' in the cattle crate, and increases the efficiency of the handling process.
- The unit is easily removed when not required.
- Weight - 28 kgs.

Setting Up

If weld on brackets are required, (part no. 8877g) these should be positioned as per the following instructions.

- Remove the clamp locks from the weld-on brackets to protect the threads and plating.
- On the existing cattle crate, tack weld the upper bracket centrally on the post, at the height given, Fig 1.
- If the Head Scoop mounting bracket is available, this can be fitted to the upper bracket to assist with the placement of the second weld-on bracket, Fig 2.
- Slide the second weld-on bracket in position and tack weld.
- Check the Head Scoop mounting bracket can be removed and fitted easily.

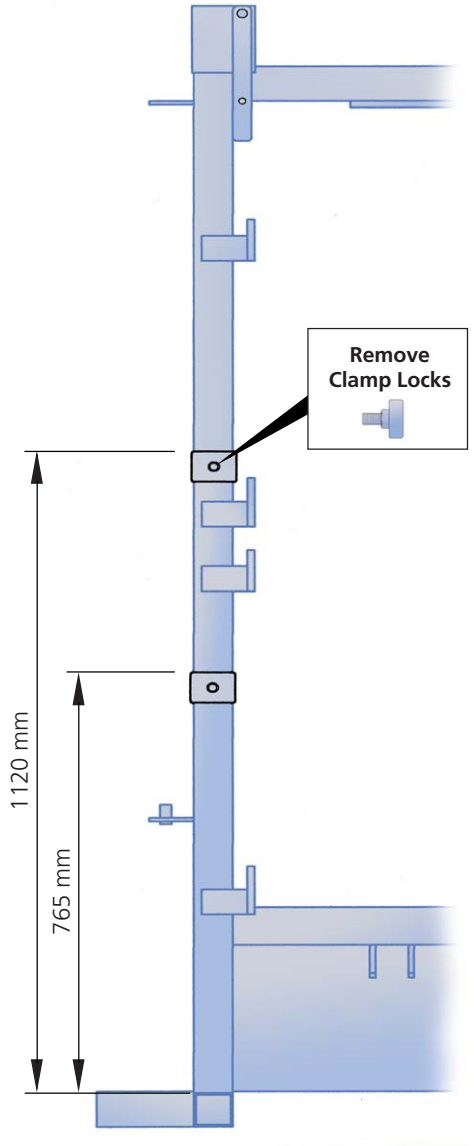


Fig 1



- When satisfied with the position and fit, fully weld both upper and lower brackets to the crate.
- Refit the clamp locks to the brackets.

With the mounting bracket fitted to the upper and lower weld-on brackets, the Head Scoop can now be attached to the crate. The bracket offers 3 height positions for the Scoop, Fig 3. Fit the head scoop to the mounting using 2 of the holes provided.

Note: On some crates, such as the Ritchie 332g, remove the detachable side rail indicated in Fig 4 below, before fitting the head scoop.



Fig 2

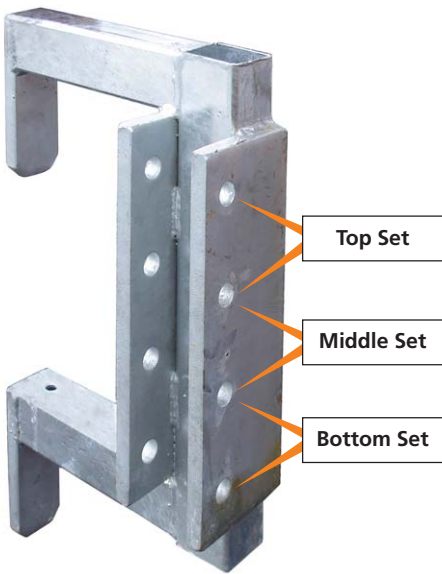


Fig 3

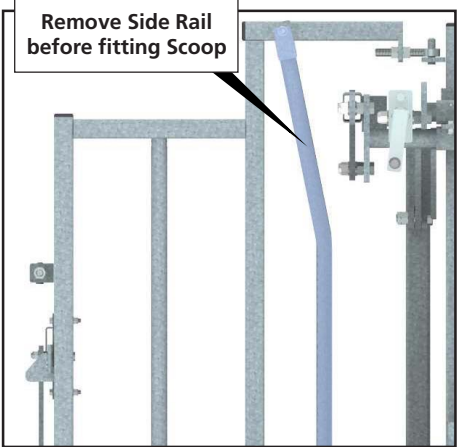


Fig 4



Overview

Fig 5 shows the Head Scoop in the operational position.

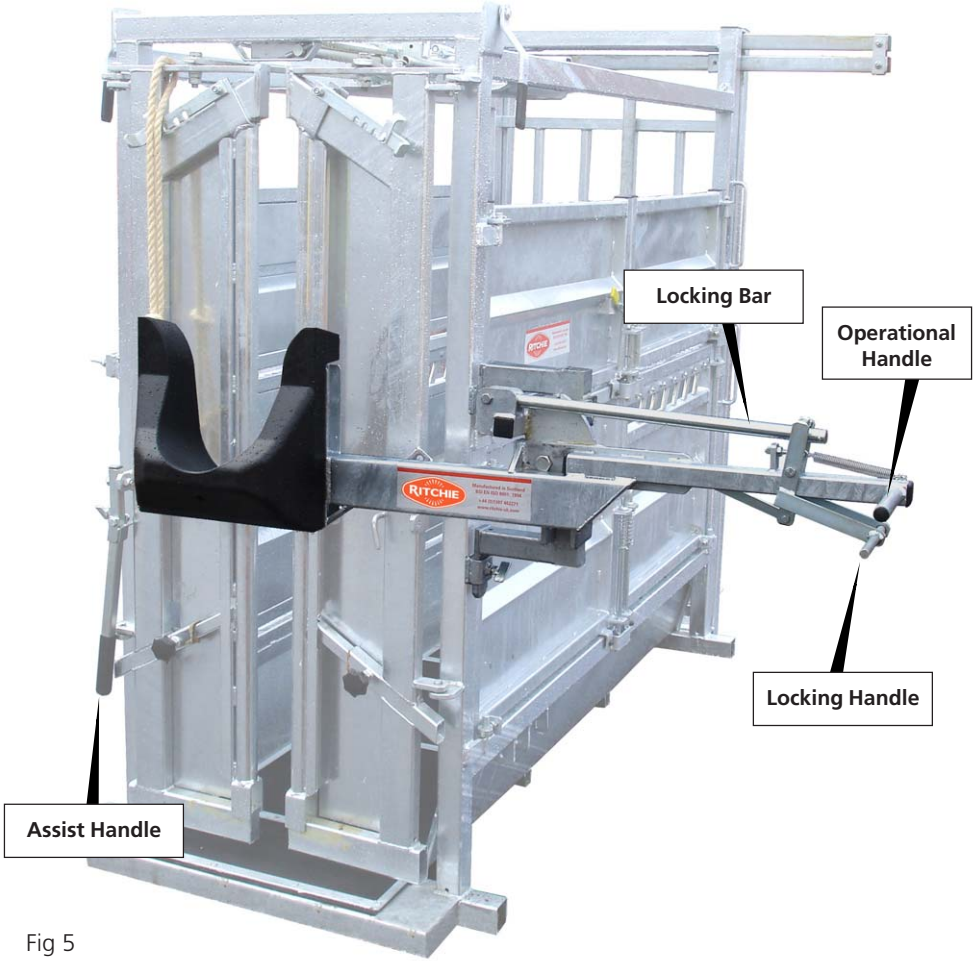


Fig 5

Note: The assist handle should be mounted on the opposite side of the crate from the Head Scoop, Fig 5.



Operating the Head Scoop

The scoop is designed to pivot from the vertical to the horizontal working position.



Fig 6

To engage - With the equipment in the vertical position - squeeze the locking handle and pull the Scoop down slightly (about 10°), Fig 6. Release the locking handle and continue to rotate the scoop on its pivot until the desired working height is achieved. The apparatus will lock in this position until released.

To release - push the operational handle slightly in a downward direction before

squeezing the locking handle and rotating the scoop back to the vertical position.

Note: A slight downward push of the operational handle as noted above will facilitate easy release of the mechanism.

Operator's should familiarise themselves with the locking and release sequence by practicing a few times before admitting an animal.

Adjustments and Maintenance

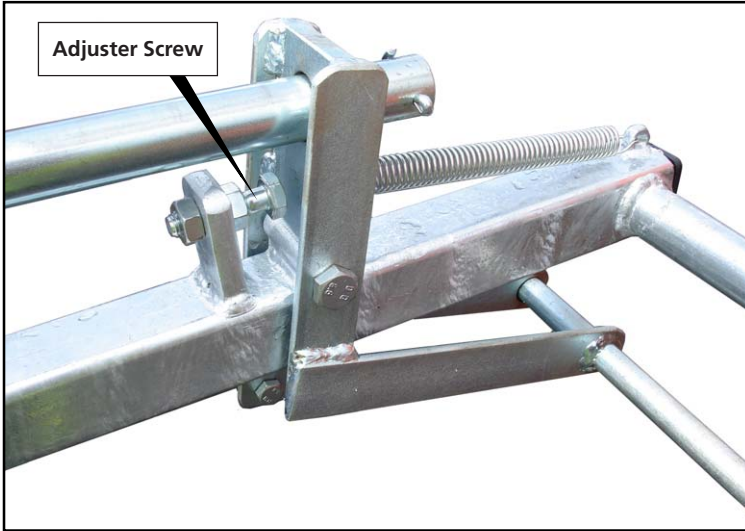


Fig 7

An adjuster screw, Fig 7, is provided to prevent finger entrapment between the operational handle and the locking handle. Lengthening the bolt provides additional finger space.

- Pivot plates should be greased weekly during operation, Fig 8.



Note: Do not apply oil or grease to the Locking Bar, Fig 8. The bar must be dry in order to function correctly!

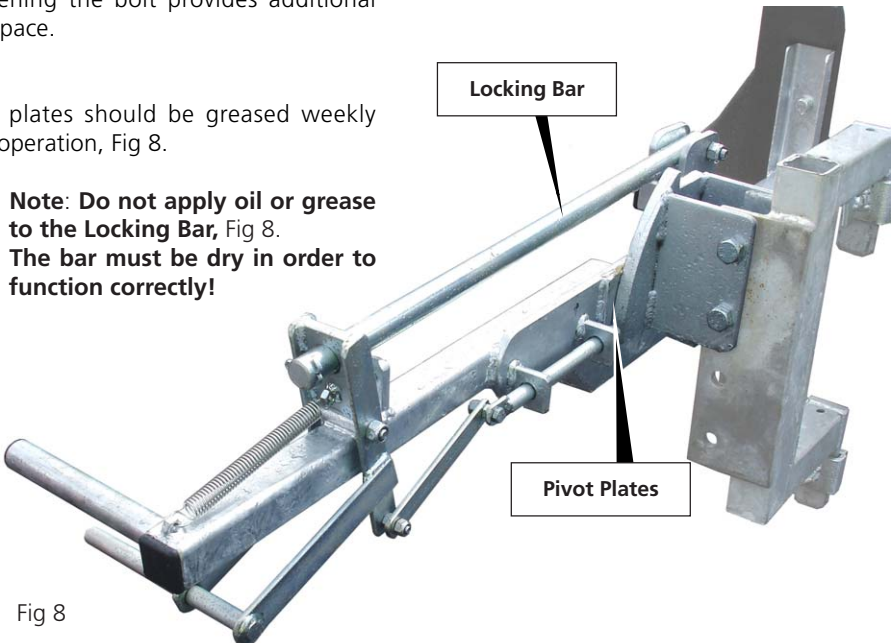
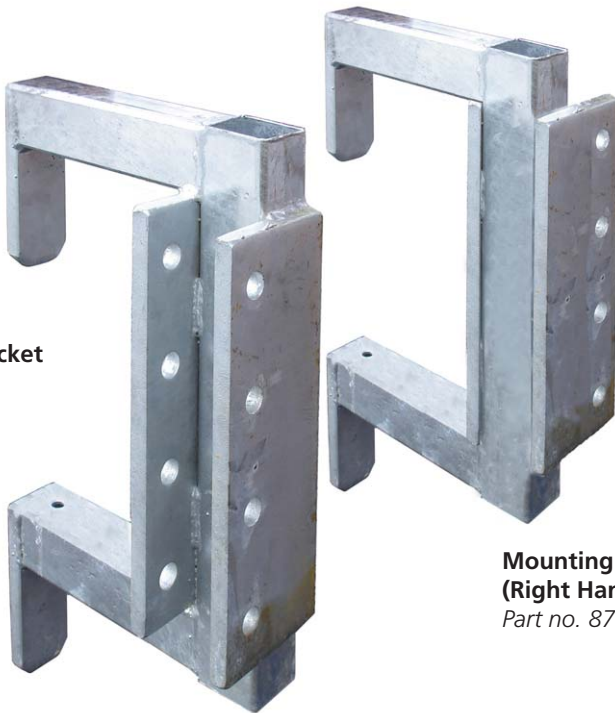


Fig 8



**Weld on brackets c/w
Clamp locks - (pair)**
Part no. 8877g



**Mounting bracket
(Left Hand)**
Part no. 8765g

**Mounting bracket
(Right Hand)**
Part no. 8764g





the perfect partner

David Ritchie (Implements) Ltd,
Carseview Road, Forfar, Scotland, DD8 3BT
Tel: 01307 462271 fax: 01307 464081
e-mail: agrisales@ritchie-uk.com
www.ritchie-uk.com